



GAT MONTHLY MEMBERSHIP PROGRESS REPORT

Results as of: 6/30/2024

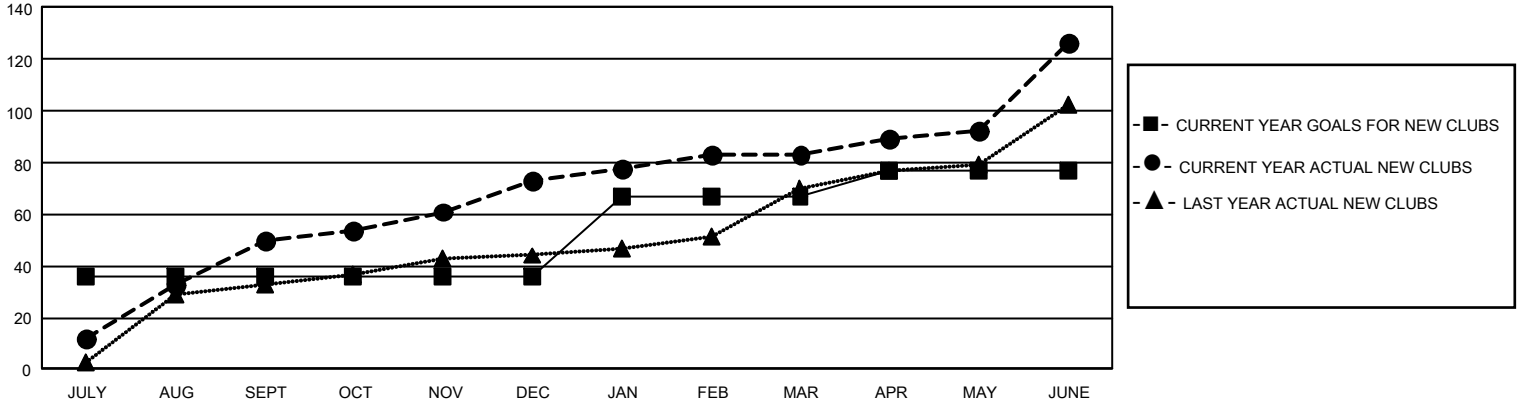
GMT Constitutional Area 6 - I, Group D

REPORT DOES NOT INCLUDE CLUBS IN UNDISTRICTED AREAS.

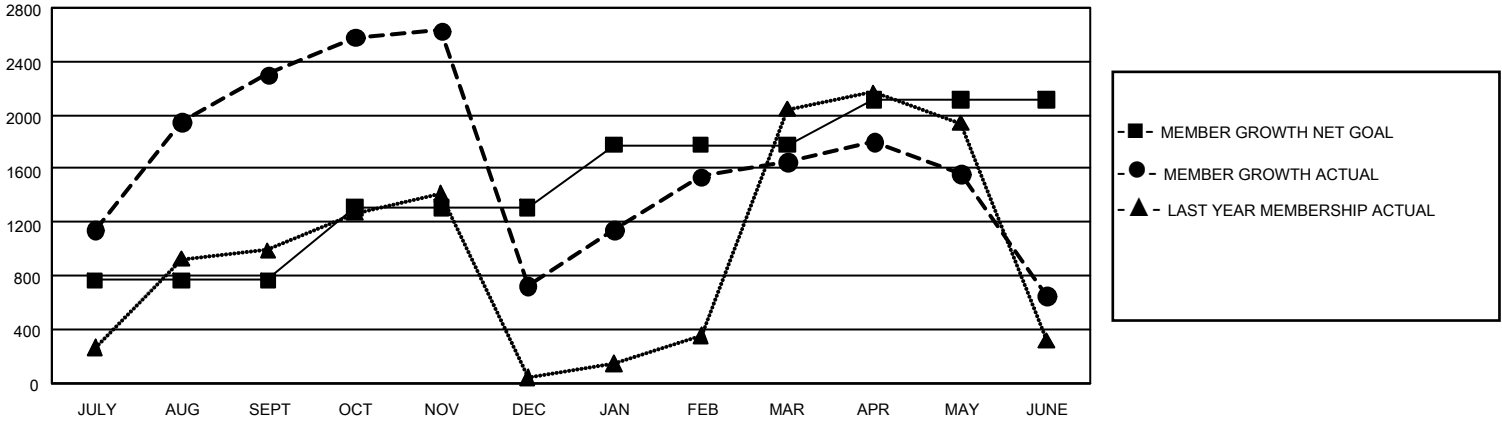
Clubs			
RESULTS FOR 2023-2024			
QUARTER	NEW CLUB GOAL	NEW CLUBS	DROPPED CLUBS
JULY/AUG/SEPT	108	50	19
OCT/NOV/DEC	0	23	54
JAN/FEB/MAR	93	10	8
APR/MAY/JUNE	30	43	11

Members			
RESULTS FOR 2023-2024			
QUARTER	MEMBER GROWTH NET GOAL	MEMBER GROWTH ACTUAL	DROPPED MEMBERS ACTUAL (including transfers)
JULY/AUG/SEPT	765	3,877	1,292
OCT/NOV/DEC	545	2,074	3,285
JAN/FEB/MAR	465	1,529	370
APR/MAY/JUNE	340	3,750	4,277

GOALS AND ACTUAL NEW CLUBS CUMULATIVE



GOALS AND ACTUAL MEMBERS CUMULATIVE



DROPPED CLUBS: 91	854 CLUBS OF 1,142 ADDED 1 OR MORE NEW MEMBERS	<u>GENDER DISTRIBUTION</u>	
<u>DROPPED MEMBERS</u>		MALE	28,047 (75.68%)
DECEASED	120	FEMALE	8,993 (24.27%)
CLUB CANCELLED	1,607	NON BINARY	9 (0.02%)
OTHER	7,465	PREFER NOT TO ANSWER	9 (0.02%)
TOTAL	9,192	TOTAL FAMILY UNIT MEMBERS	13,338
	CLICK HERE FOR CUMULATIVE MEMBERSHIP DATA	FAMILY MEMBERS PAYING HALF DUES	7,800